

The background image is a photograph of a garden. In the foreground, there are several flower beds with various colorful flowers, including purple, pink, and yellow. A green lawn is visible between the flower beds. In the background, there are tall trees and a white windmill with four blades. The overall scene is bright and sunny.

# History of the Teaching & Display Gardens

Spooner Agricultural Research Station

1036 E Maple Street

Spooner, Wisconsin 54801



# Summer 1999

First summer  
garden tour  
at Spooner  
Ag Research  
Center.





# Spring 2000

## 3 year Shrub Rose Variety Trial installed.





Fall 2002

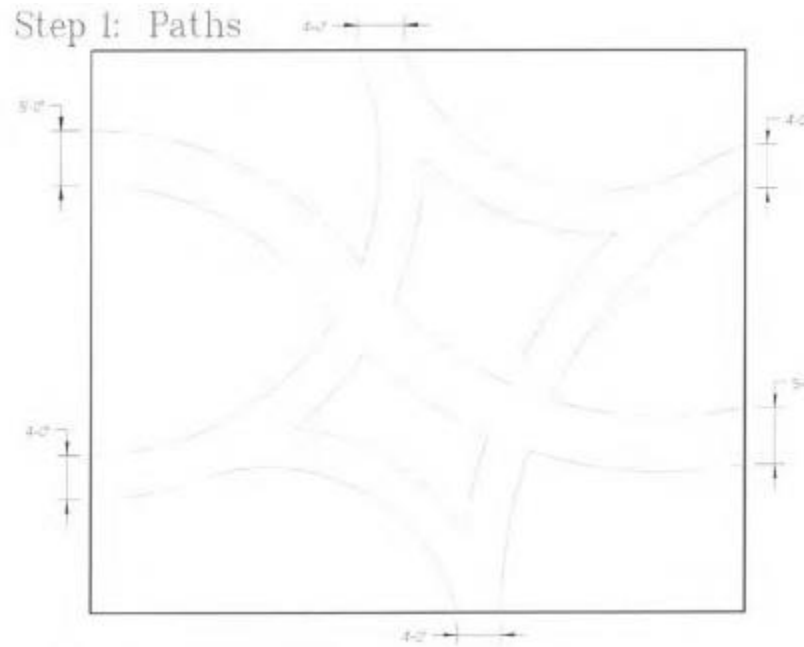
We are  
designated as  
an official “All-  
America  
Selections”  
display garden.





# Fall/Winter 2003

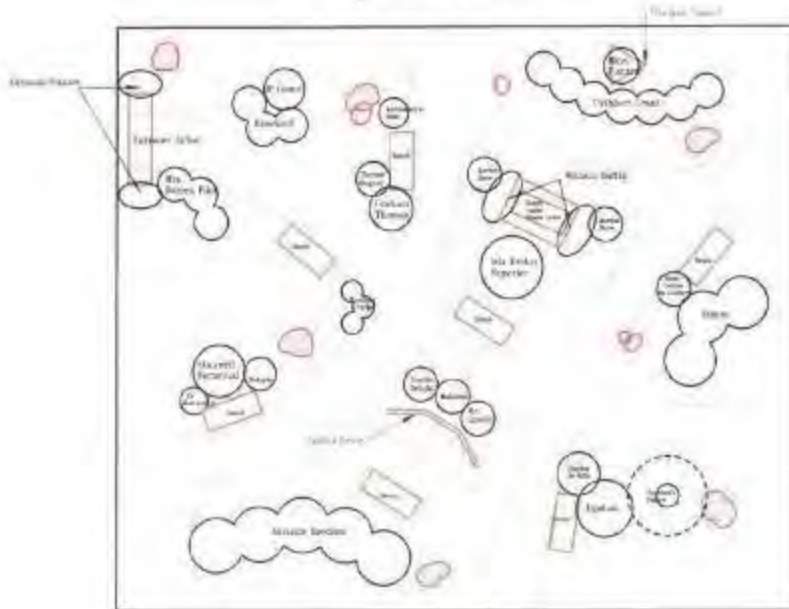
Plans were  
developed for new  
Perennial Display  
Garden.



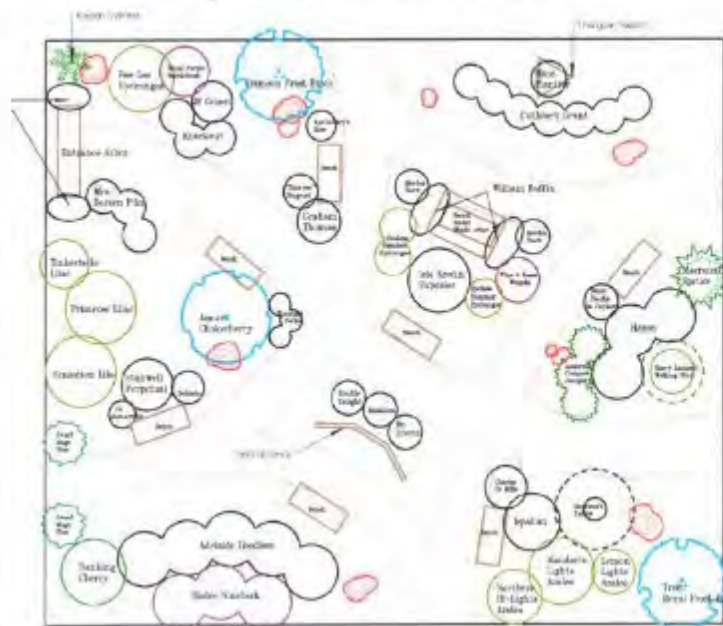
Step 2: Structures & Boulders



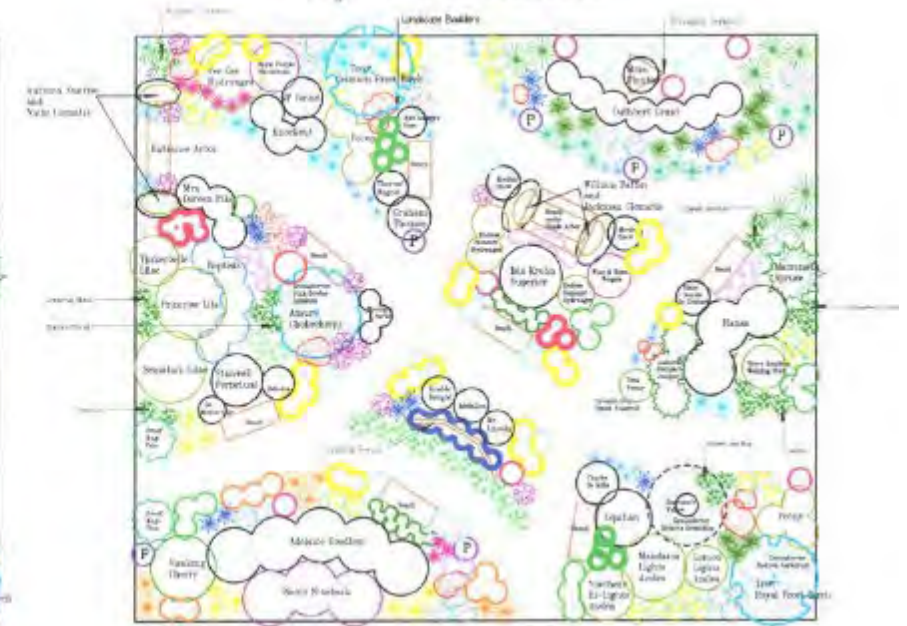
Step 3: Roses



Step 4: Trees & Shrubs



Step 5: Perennials



# Spring 2004

Perennial  
Display  
Garden layout  
and planting.





# Summer 2004



- Perennial Display Garden complete with benches and pathways lined with stones.
- Garden shed constructed and installed.





Summer 2005

Arbors constructed and installed in  
Perennial Display Garden.





# Perennial Display Garden

**Summer 2004**



**July 2005**



**July 2007**





# Summer 2007

Our AAS plantings were traditionally planted in one row 168'x6' This year we began planting that same row in 12'x6' sections.



Bed 9		Bed 10		Bed 11
		3'	6'	3'
	4'	24 Viola		
	16'	6 Marigold	8 Celosia	6 Marigold
	16'	12 Nicotiana		
	16'	6 Marigold	8 Celosia	6 Marigold
	4'	24 Viola		

12 Nicotiana 'Perfume Deep Purple'  
 16 Celosia 'Celway Terracotta'  
 24 Marigold 'Moonstruck Orange'  
 48 Viola 'Enduro Sky Blue Martien'





# Summer-Fall 2007

- Row of ornamental shrubs removed and cold hardy wine grapes planted
- Amur Chokecherry died and was removed. Eventually replaced with a Prairie Radiance Euonymus.





Spring  
2008

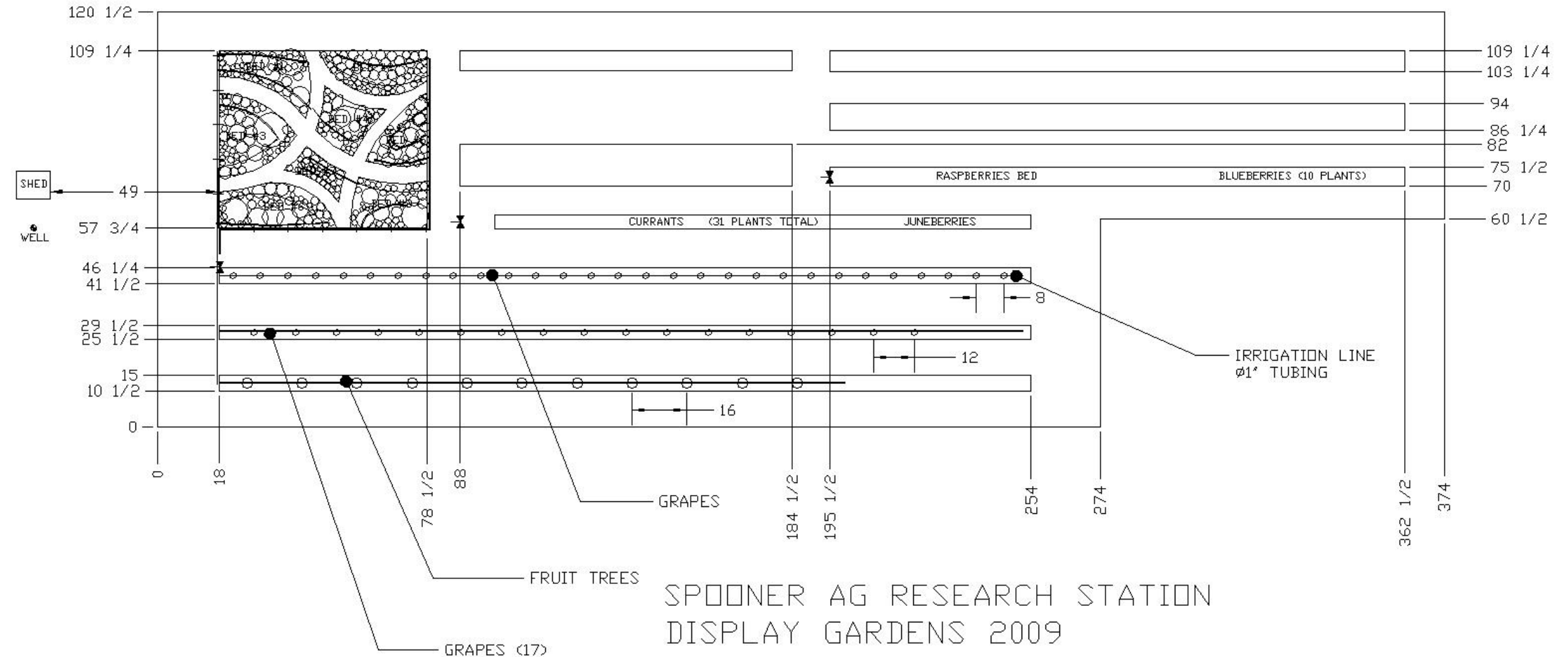
Windmill and  
well with airlift  
pump and water  
tower is installed.





# Summer 2009

Drip irrigation installed in Perennial Display Garden, in grapes and apple row.





# Summer 2009

Twilight Garden Tour  
attendance tops 200.





# Summer 2010

- High tunnel is built for fall raspberry trials.



Photo 2015



# Fall 2010

- Perennial Garden renovation. Dividing plants.





# Summer 2011

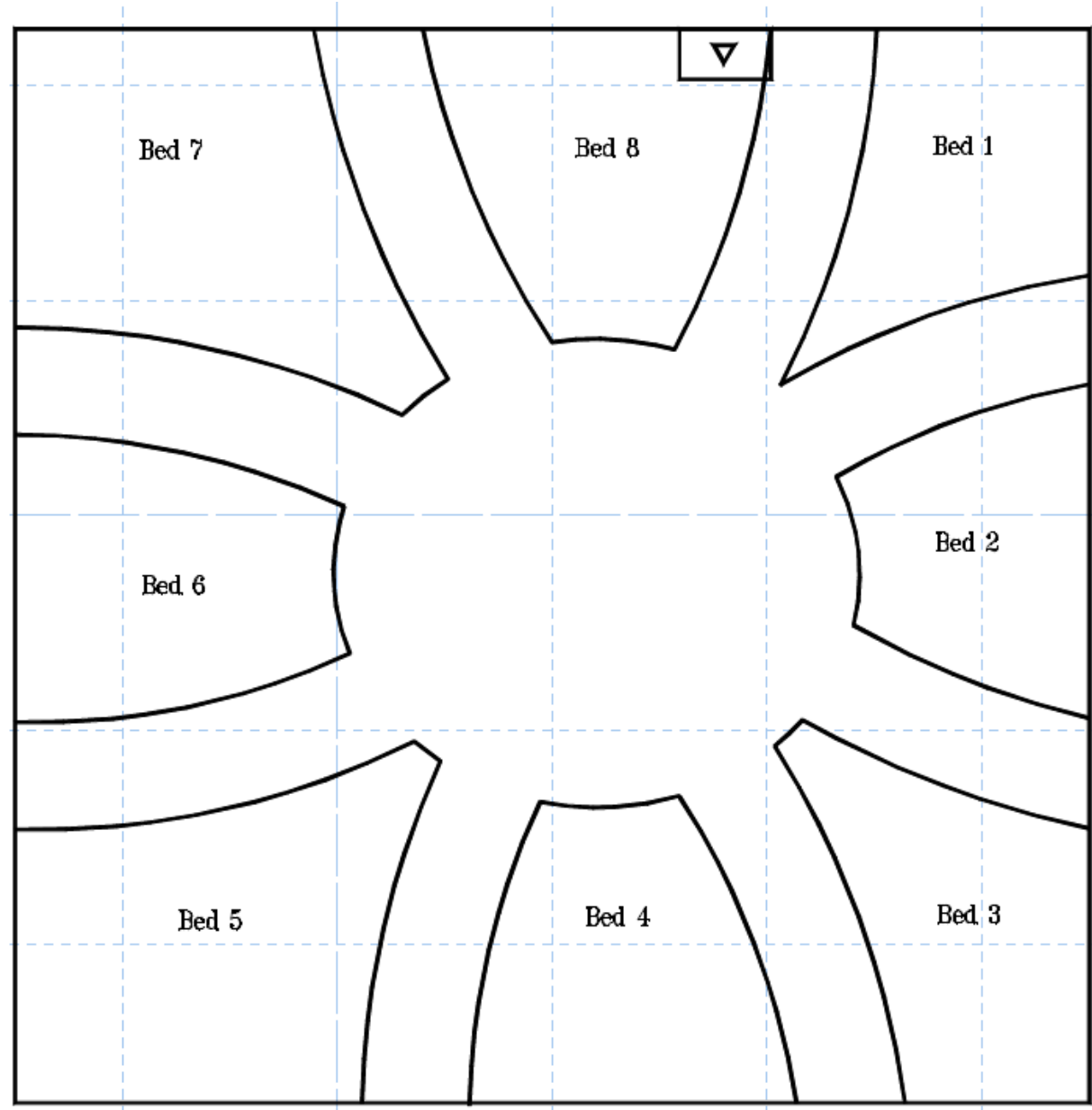
Teaching and Display  
Garden public welcome  
sign added to windmill  
base.





# Fall/Winter 2011

- Plans developed for new 50'x50' AAS Garden space.
- Pin wheel shape provides eight plant beds that can be viewed from all sides, and a central, oval shaped outdoor classroom.







# Spring 2012

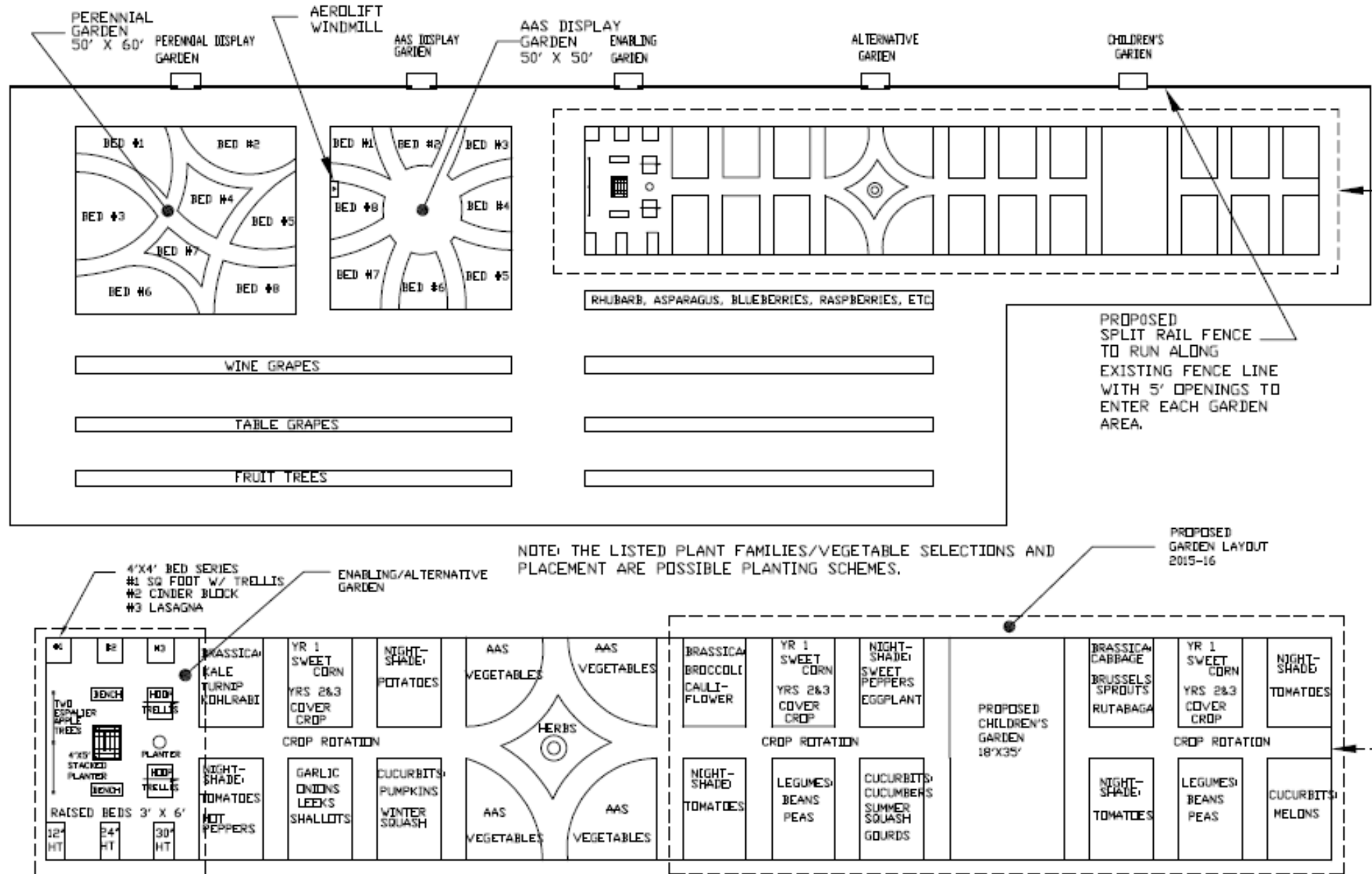
- Installed AAS garden, sodded walking paths and central gathering space.
- 4 x 4 raised beds added to vegetable garden.
- North fence removed.



## SPOONER AGRICULTURE RESEARCH STATION TEACHING & DISPLAY GARDENS

# Winter 2012- 2013

Long range plans developed for the Teaching and Display Gardens.



PROPOSED  
GARDEN LAYOUT  
2015-16



# Spring 2013

- Sod removed and area prepped to accommodate newly designed vegetable gardens and raised bed area.
- Gravel mulch with sand base installed in raised bed area.
- Raised bed boxes were installed.





# Summer 2013

Over 200 visitors to Twilight Garden Tour.  
Second Wind String Band plays live music.





# Fall 2013

- We are awarded second place in the National AAS Landscape Design Contest.
- Perennial Display Garden is renovated by dividing overgrown plantings. Extra divisions are heeled in for plant sale.

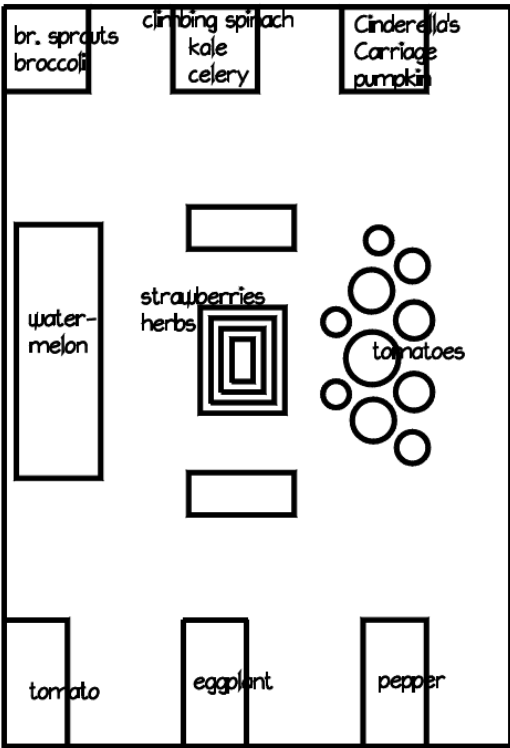




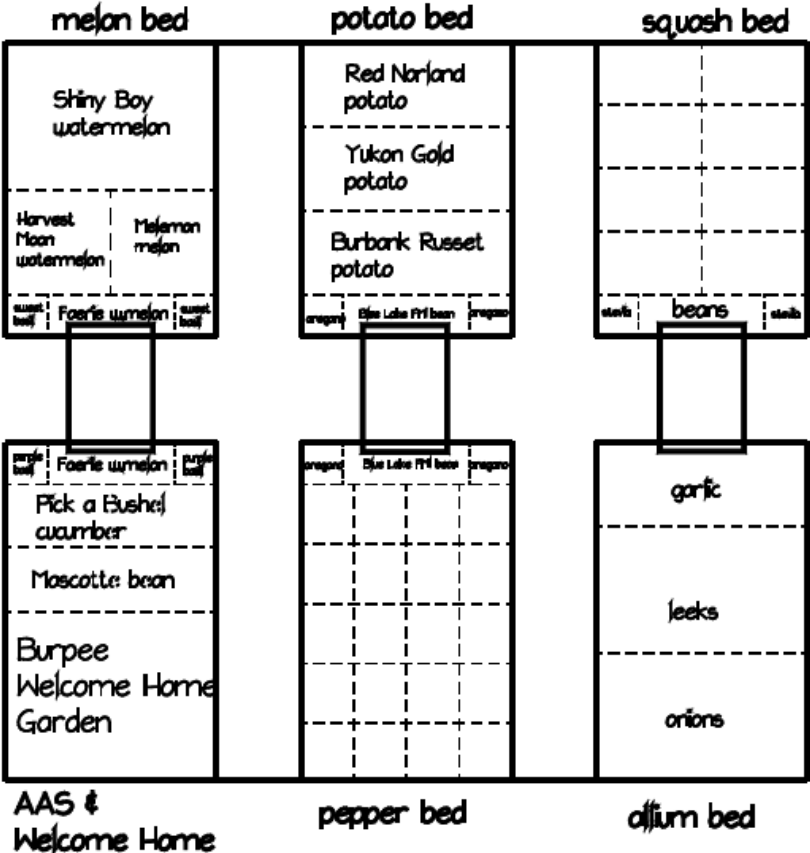
# Spring 2014



Raised Bed and  
Container Area

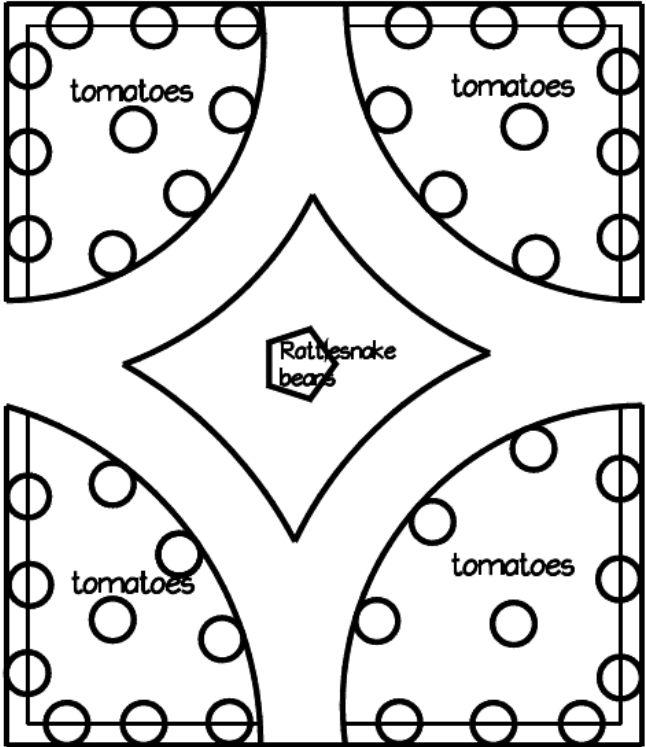


Rectangle Beds and  
Hog Fence Arches



Planting plans for  
vegetable area 2014

Tomato Room





Summer 2014



Teaching and Display Gardens make front cover of UW-Madison's CALS Grow Magazine.



# Fall 2014

- We are awarded first place in the National AAS Landscape Design Contest, 'Incorporating Containers in the Landscape' theme. We chose to use unique repurposed containers depicting items found on small family farms. We called it 'Down on the Farm.'
- Blackberries in the high tunnel are removed.





# Spring/Summer 2015

- Organic tomato and pepper variety trial (NOVIC) occupies two beds at south end of garden.
- All apple trees removed because many were killed or badly damaged after the “Polar Vortex” winter of ‘13-’14.
- Three new apple trees planted with the help of Spooner Middle Schoolers.
- East garden fence removed.
- Drip irrigation removed from Perennial Display Garden.
- Row of blueberries and raspberries removed.





Summer  
2015



- Twilight Garden tour is moved inside for the first time in 17 years due to rain.
- WI Garden Club Federation recognizes Kevin Schoessow and the Teaching and Display Garden for their state-wide “Bronze Award.”



# Fall 2015

We are awarded second place in the National AAS Landscape Design Contest, 'Garden Geometry' theme.



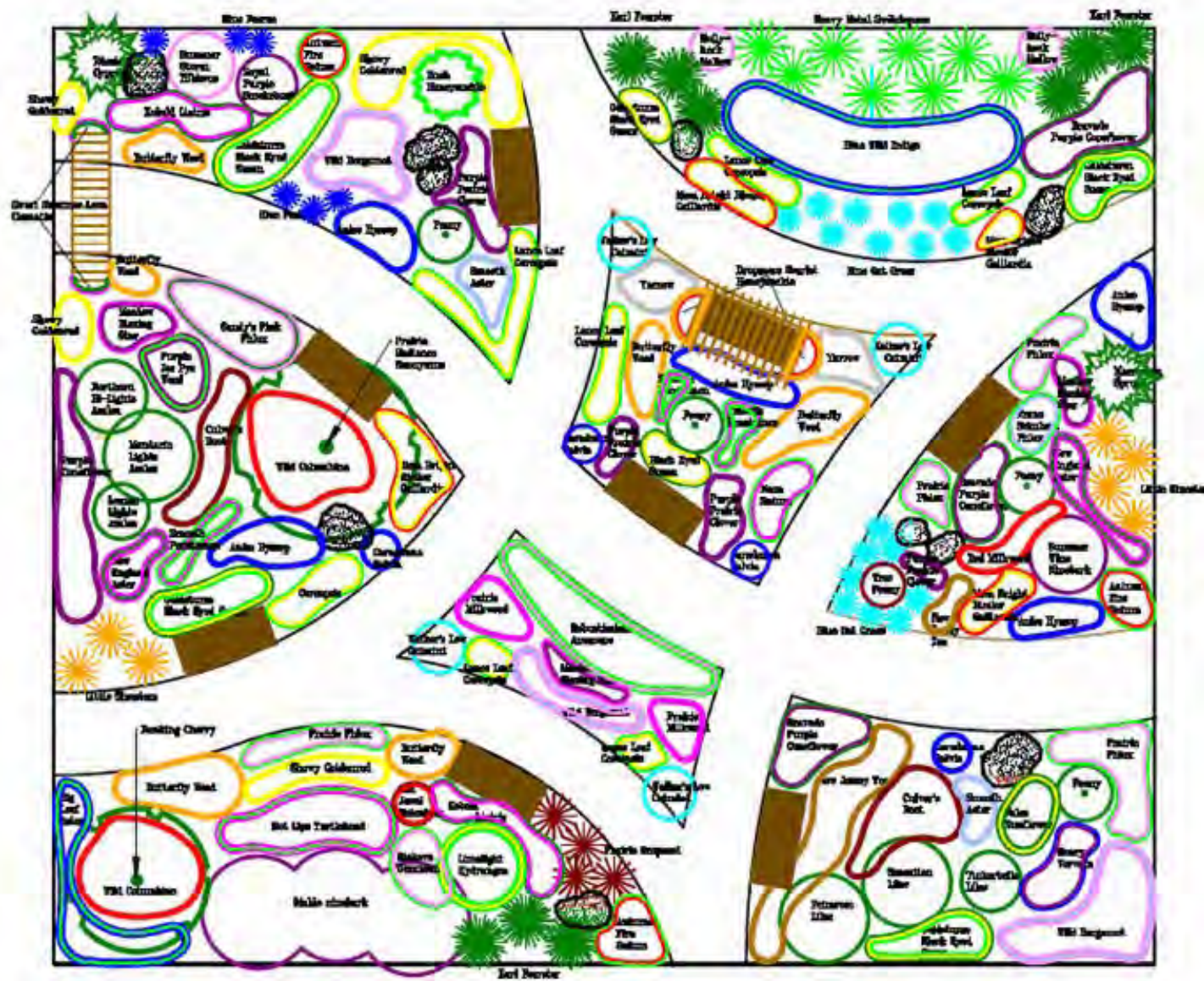
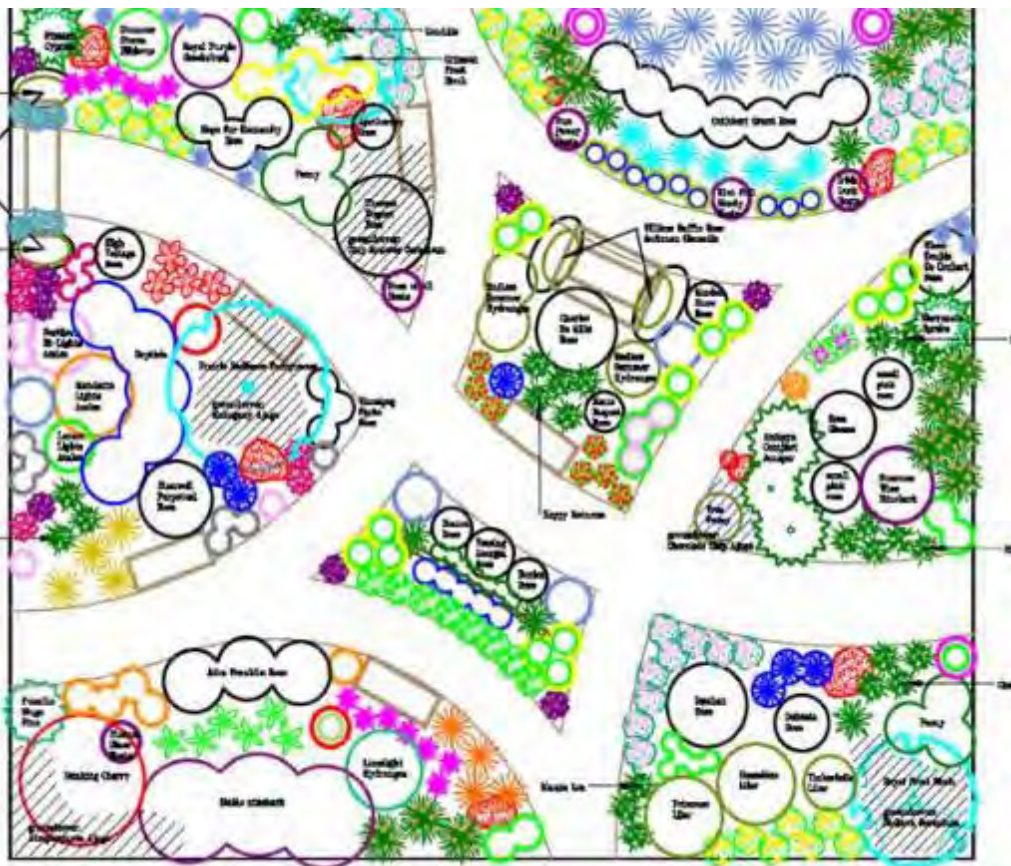
Two Crimson Birches removed from Perennial Display Garden in preparation for renovation next spring.



# Fall 2015 – Spring 2016

Plans developed for renovation of Perennial Display Garden into a pollinator friendly garden.

# Perennial Display Garden Plan 2015





# Spring 2016 planting day





# Spring 2016



- Perennial garden renovated and re-named as a “Monarch and Pollinator Sanctuary” (MAPS) display garden .
- MAPS garden is designated by Monarch Watch as an official “Monarch Waystation”.





# Summer 2016

- Gravel mulch and sand base in raised garden area is removed and placed in driveway entrance to garden.
- Second year of organic tomato and pepper variety trial (NOVIC) continues at south end of garden.
- Fall bearing blackberries and raspberries outside of high tunnel are removed.





# Fall 2016

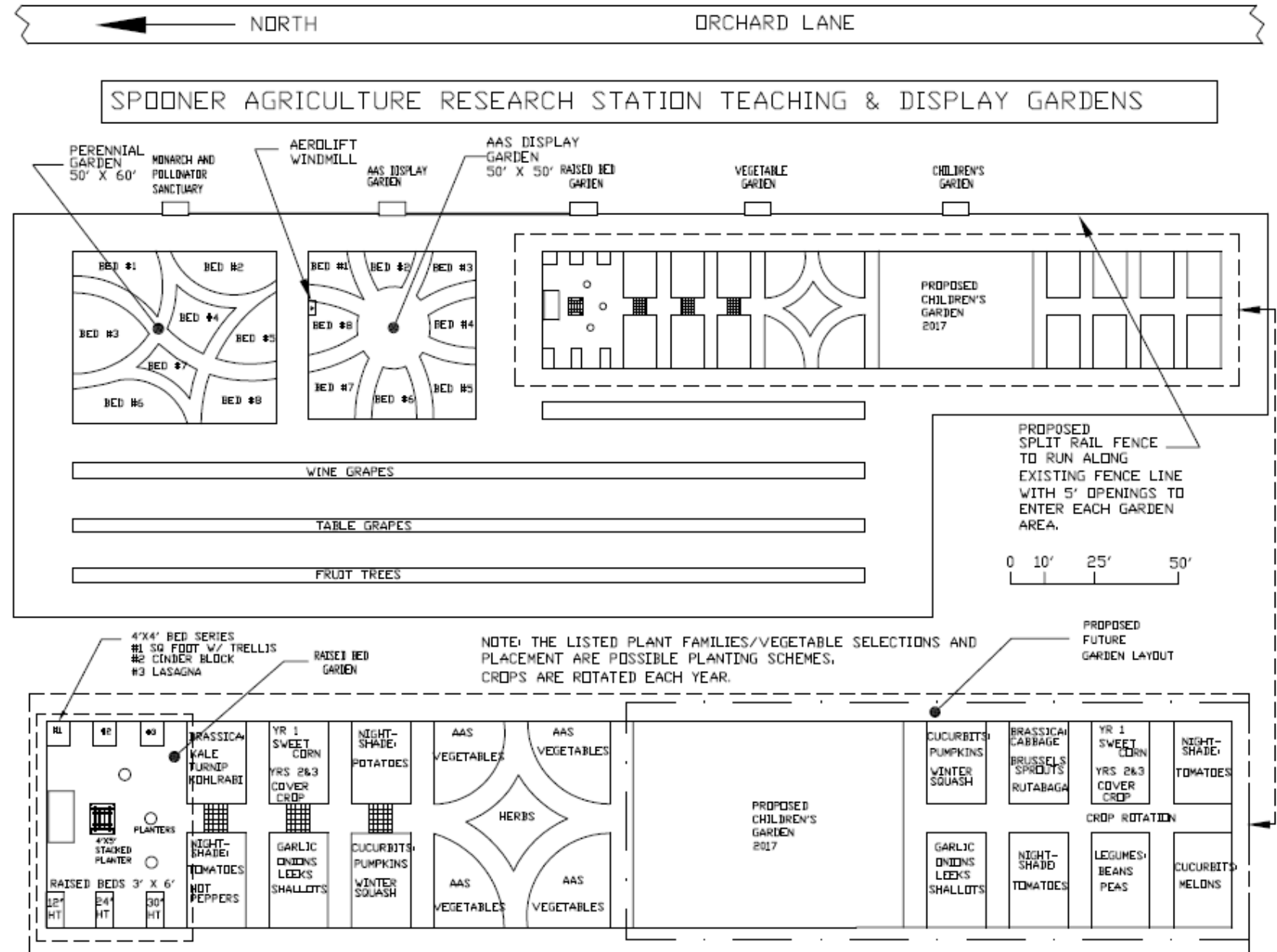
We are awarded second place in the National AAS Landscape Design Contest, 'Incorporating Pollinator Education' theme.





# Winter 2016/2017

- Plans underway to add a Children's Garden adjacent to the vegetable garden area.
- High Tunnel plastic is blown off in 50+ mph wind.

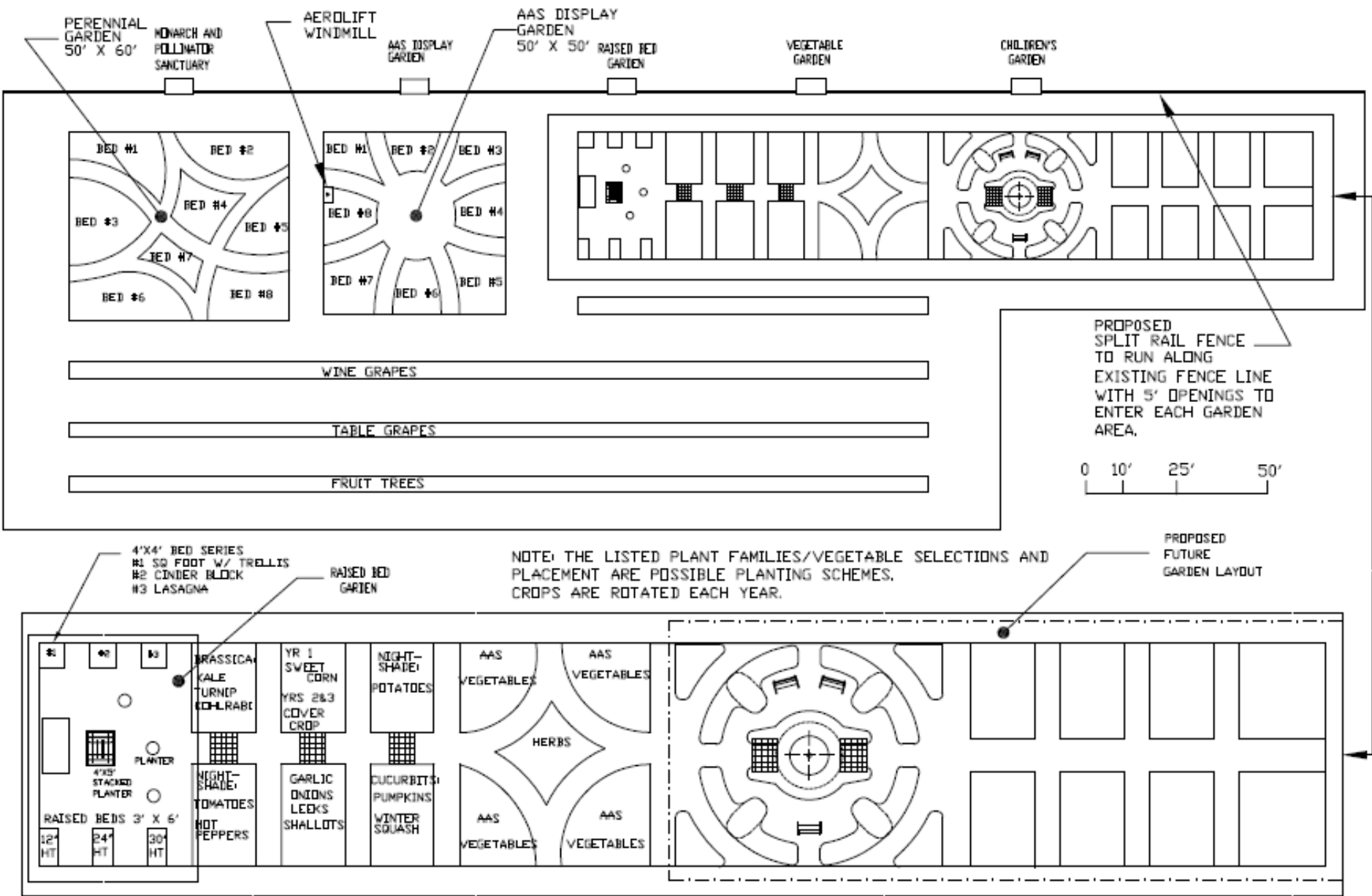




# Spooner Agricultural Research Station Teaching and Display Gardens

Spring  
2017

Plans for  
layout of  
Children's  
Garden





# Meet Me In The Garden Series





# Mini Master Gardeners





# Workshops







# Spooner Agricultural Research Station Twilight Garden Tour

*Free and Open to the Public*

**Tuesday, August 13, 2019**

**4 -7:30 PM**

## *Displays & Demonstrations*

*Wagon Tours of Research Station Plots*

*Straw Bale Gardening*

*Friends of the Namekagon Barrens*

*Hunt Hill Audubon Sanctuary*

*Invasive Weed Management*

*Vegetable Tasting & Grilling*

*Organic Vegetables*

*Table & Wine Grapes*



**Extension**

UNIVERSITY OF WISCONSIN-MADISON

## *University of WI Featured Speakers*

- Brian Hudelson
- PJ Liesch
- Brian Smith

Call 715-635-3506 or  
800-528-1914 for  
more information.



*Please contact us for special assistance regarding our programs. Requests are confidential. UW-Extension provides equal opportunities in employment and programming, including Title IX and ADA.*



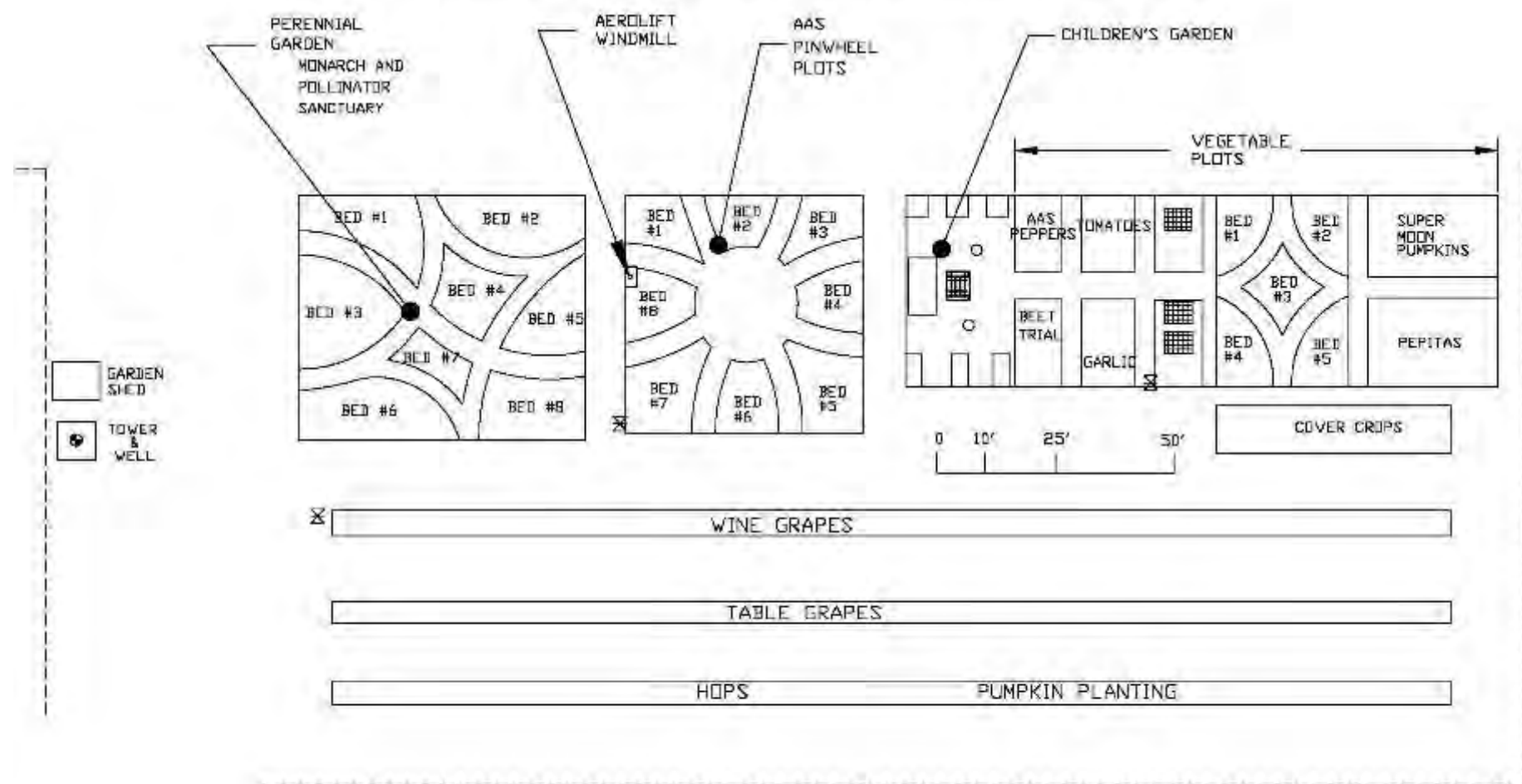
**Highway 70 east of Spooner to Orchard Lane**







# TEACHING AND DISPLAY GARDEN LAYOUT FOR 2020





# Fall 2019

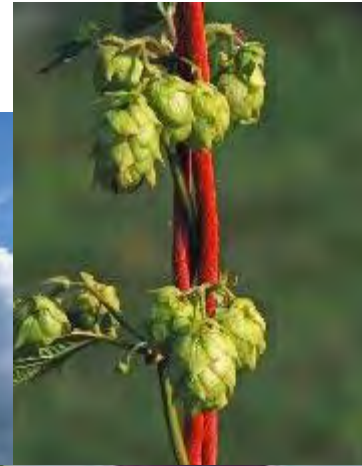
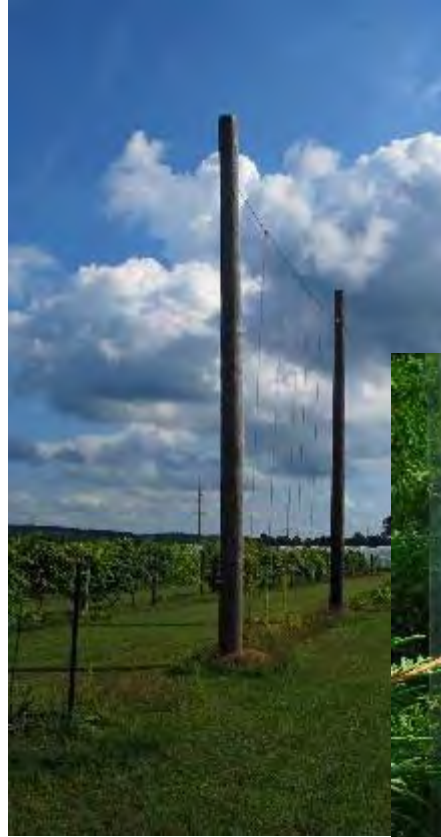
- High Tunnel Collapses in early December after heavy snow fall.
- High tunnel is disassembled and raspberries are moved to south end of garden in Spring 2020.
- A new high tunnel is relocated to Seed to Kitchen Collaborative research area.





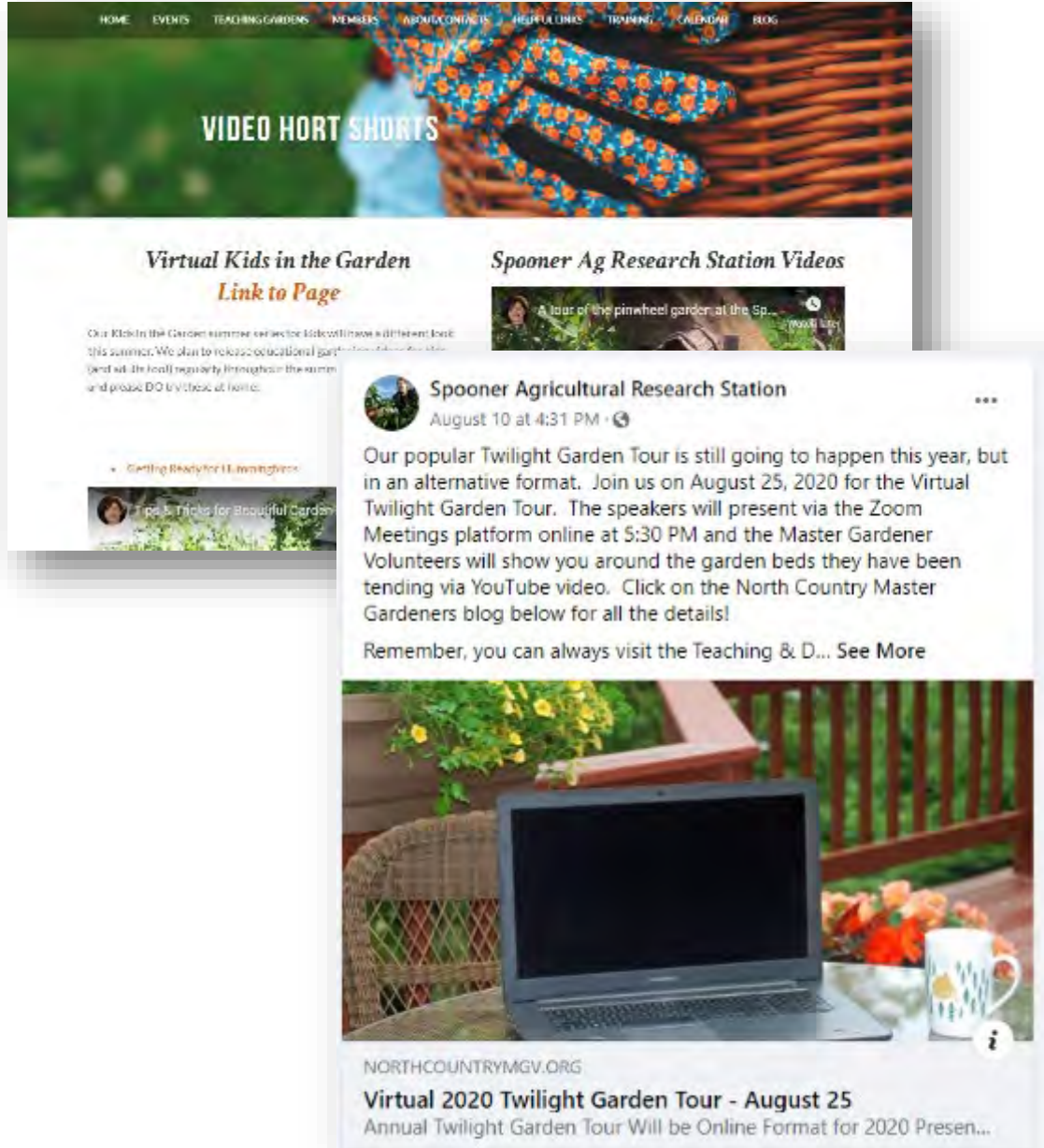
# Spring 2020

- Renovation in wine grapes; extra Frontenac are removed and replaced with Itasca and Zilga
- A hops demonstration is established complete with 18 ft trellis
- COVID-19 forces cancellation of all garden events, however Garden remains open to the public for self-guided tours.
- Social distancing protocols are put in place for MGV and garden visitor.



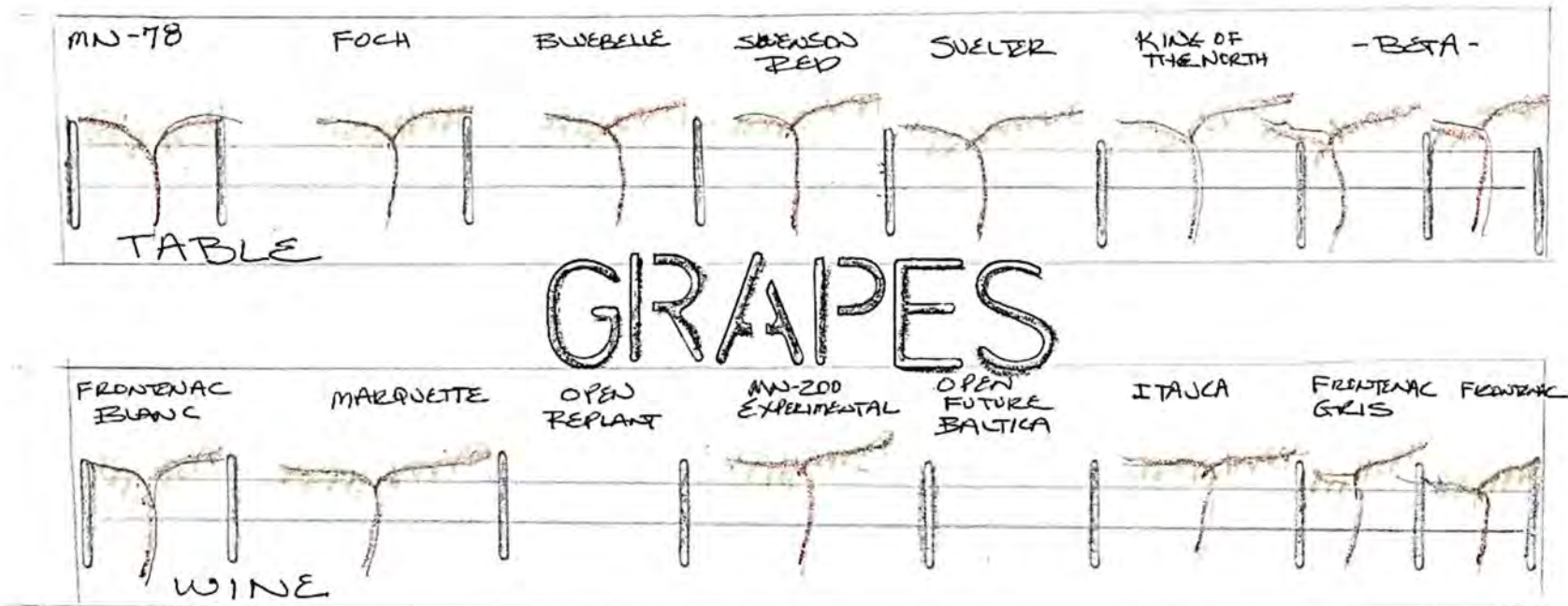
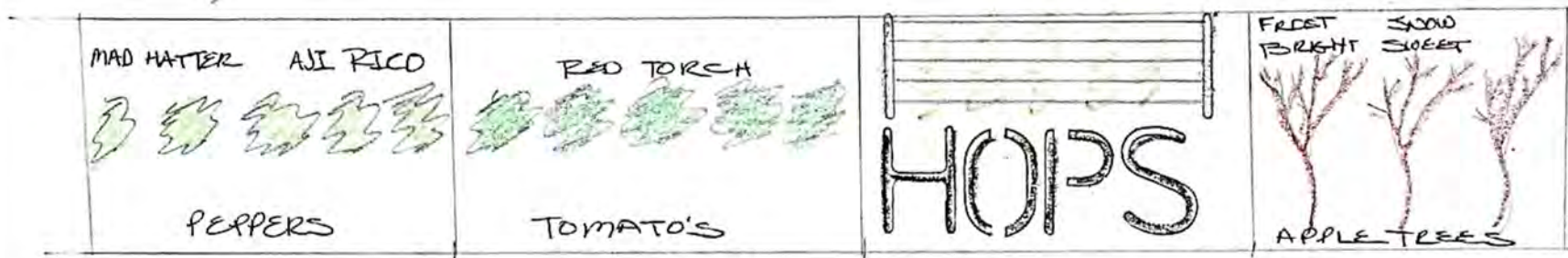


# Summer 2020



- A temporary season extension caterpillar tunnel is put up over fall raspberry on south end.
- *Bombus fervidus* (bumble bee) nest is discovered in compost bin filled with grass. Bin is turned into 'teachable moment' display.
- In lieu of in person workshops and educational events, plans are put in place to offer virtual outreach.
- YouTube play lists are created for Kids in the Garden and the Twilight Garden Tour, as well as other virtual garden video updates.





2021





NORTH

ORCHARD LANE

## TEACHING AND DISPLAY GARDEN 2021

